

# Residential Stormwater Solutions with Rainxchange

Fred Pape

Specialty Projects Manager



# Gordon Residence

## Newton, Massachusetts

- Decorative Fountain Rock RainXchange<sup>®</sup> System with a 4,000 gallon storage basin
- 1,000 gallon system for hand watering garden
- 2,400 sq.ft. Permeable Driveway
- Irrigation System

# The Customer Is: Green Gardener



Avoiding Pesticides and Chemical





2,400 sq. ft. asphalt driveway



# Excavation for the 4,000 Gallon Basin



## Deep to Support Vehicular Loading

Actual Storage Significantly  
More than 4,000 gallons









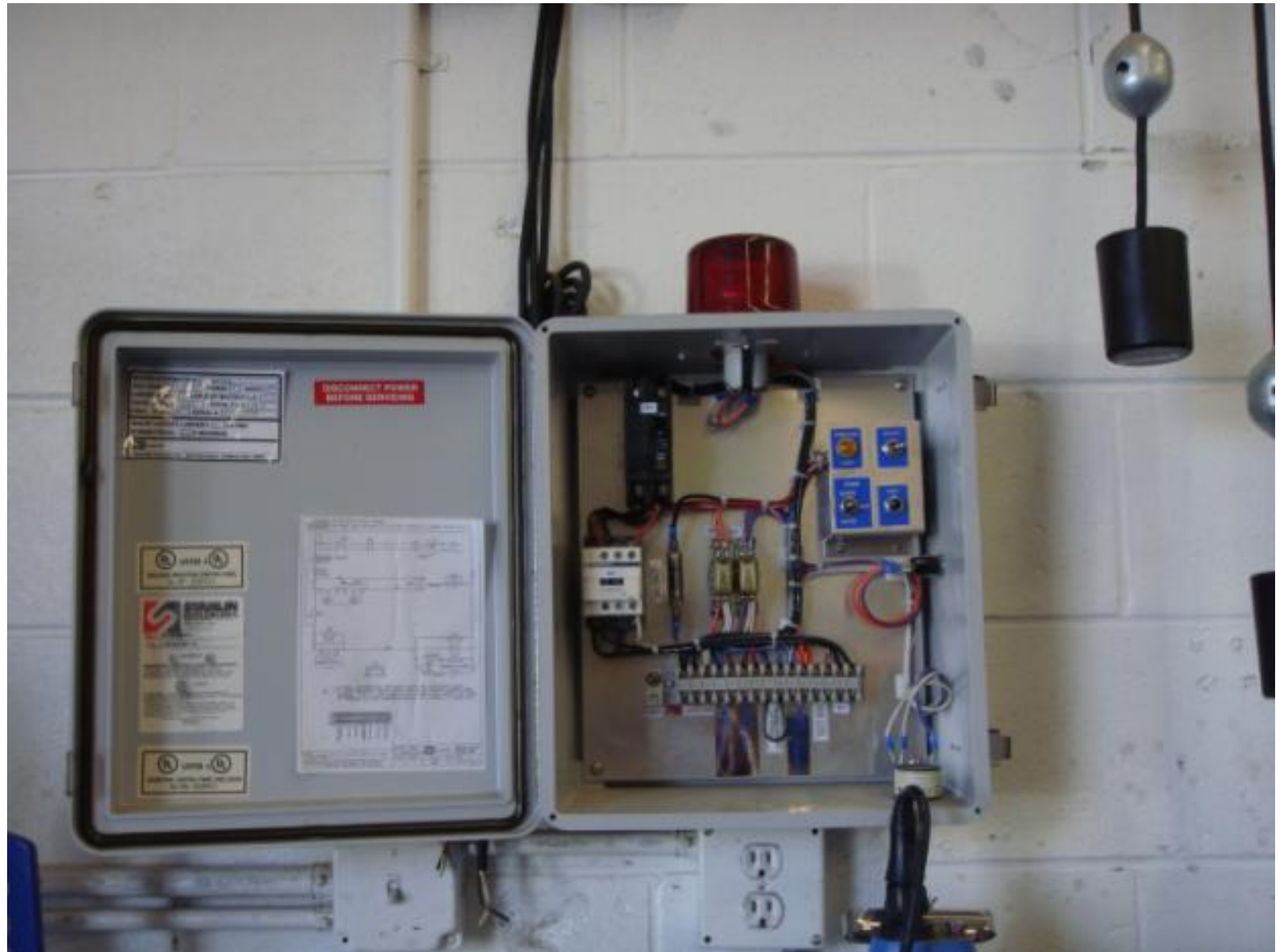
## Fountain Rock Hand Picked By The Owner

-The fountain aerates the water  
keeping it clean and tells the  
story of what is happening below.





# Fully Automated Irrigation with Municipal Back-up



Before...







# Happy Homeowner





# RainXchange™ Pilot Project Palos, IL

- Tear down home project
- City planners concerned with stormwater
- Used a permeable pavers in combination with a RainXchange™ system to address their concerns
- Decorative Fountain and Pondless® Waterfall with a 3,000 gallon RainXchange™ System
- Homeowner wants to use the rainwater for irrigation and to flush toilets



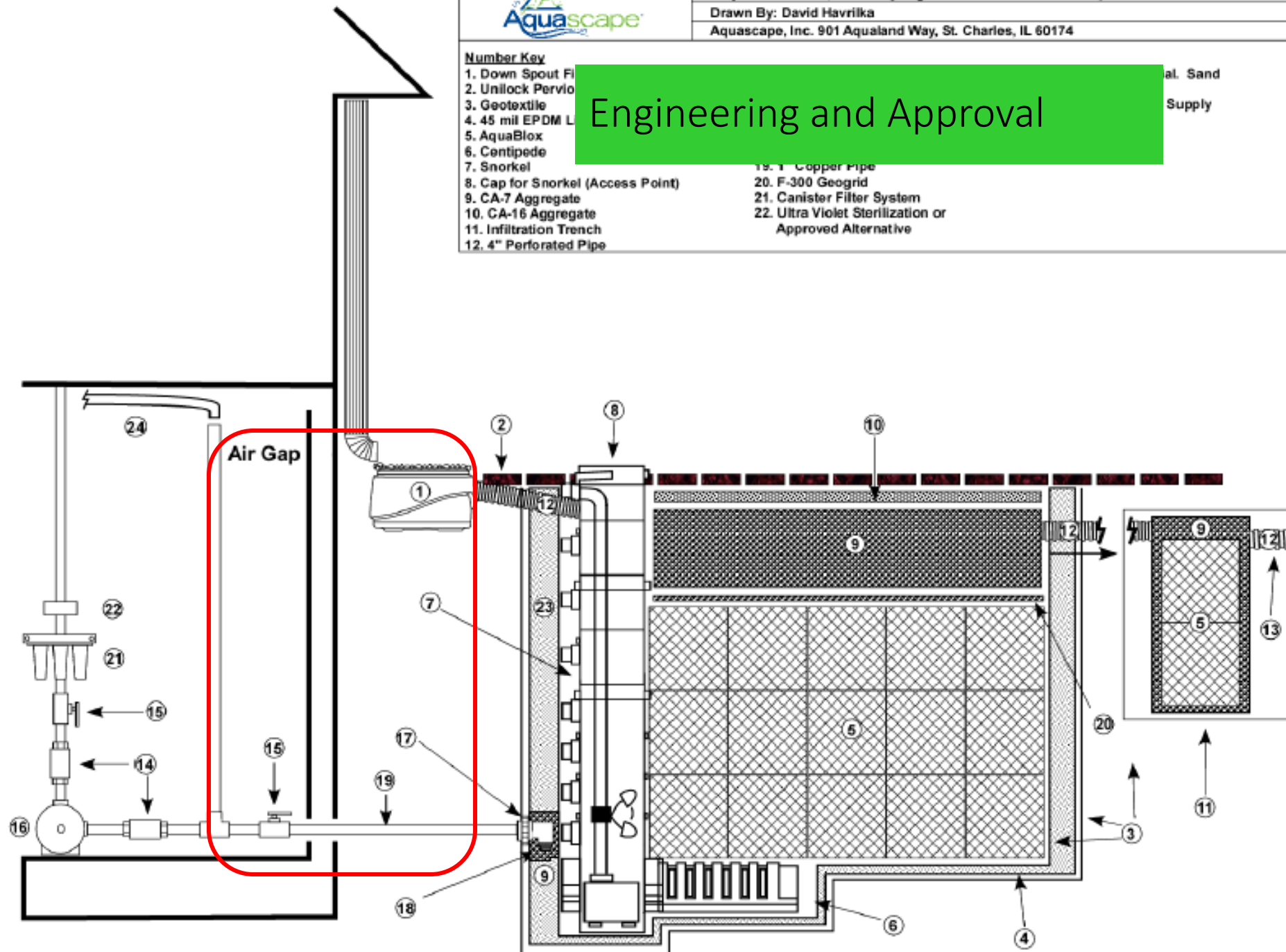
**Number Key**

1. Down Spout Filter
2. Unilock Pervious
3. Geotextile
4. 45 mil EPDM L
5. AquaBlox
6. Centipede
7. Snorkel
8. Cap for Snorkel (Access Point)
9. CA-7 Aggregate
10. CA-16 Aggregate
11. Infiltration Trench
12. 4" Perforated Pipe

13. 1" Copper Pipe
14. F-300 Geogrid
15. Canister Filter System
16. Ultra Violet Sterilization or Approved Alternative

al. Sand  
Supply

# Engineering and Approval





# 3,000 Gallon Basin



# Sized Accordingly



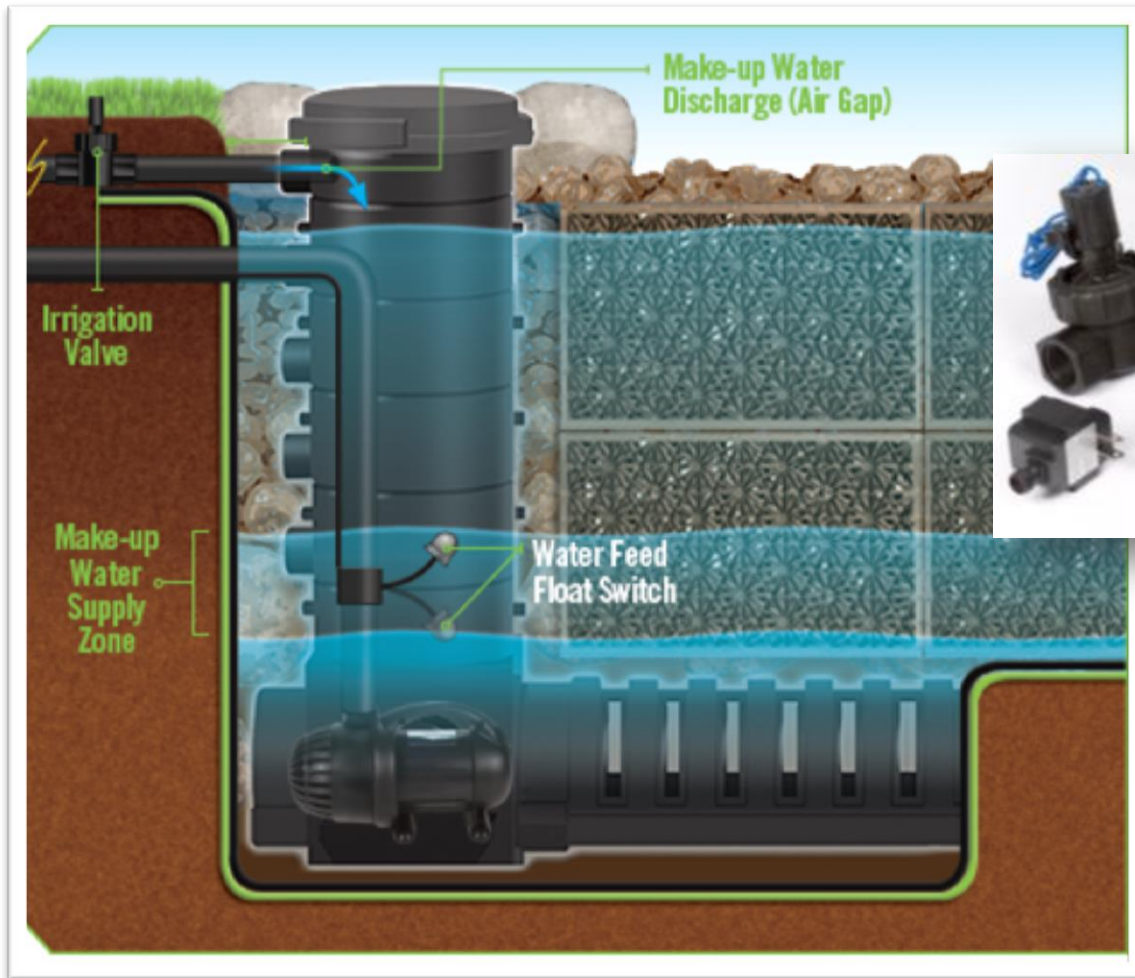
# Snorkel Vault™



# Water Make-up System



Provides alternative source of water during low water levels





## Control Switch – Dosing Float



# Water Make-up Added Inside



# Plumbing and Filtration



**TOILET WATER IS NOT  
SAFE FOR DRINKING**

# Drinking Water Standards



